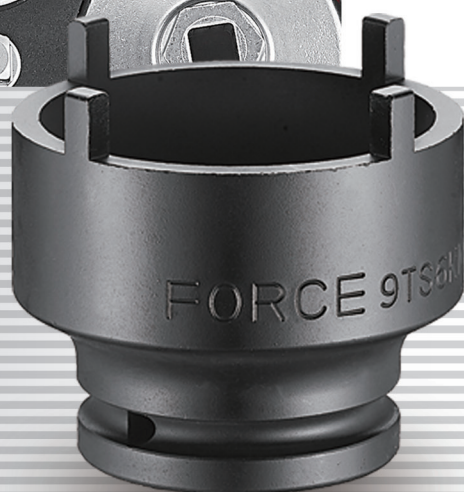


FORCE®

2018 / 2019 Addition



Power you on

Engine timing tool set for BMW S54



907G20

5/10.4/11/1.7' 2080g

- For checking and setting camshaft timing when installing VANOS adjustment unit on S54 engines.
- Application : M3 cabriolet(00~06), sports coupe(99~06), CSL sports coupe(03~04)



Engine timing tool set for BMW S65



912G15

5/14.2/14.8/1.4' 3336g

- Used to locate the camshaft in TDC position and correct the VANOS angle.
- Application : BMW M3 S65 engine (07~13)



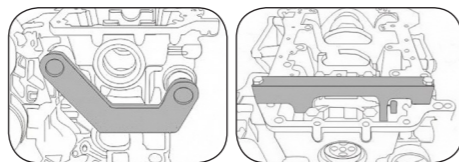
Engine timing tool set for BMW N47/N47S/N57



902G28

4/13/13.6/0.9' 3250g

- Use to align the balance shaft and crankshaft timing position.
- Applicable: BMW N47/N47S/N57 diesel engine.



Engine timing tool set BMW B38,B46,B48



911G10

3/22/22.6/1.93' 6930g

- Installment and removal of camshaft / variable camshaft timing unit.
- Check and adjustment of timing.
- Applicable: BMW B38, B46, B48



Vacuum pump sealing cover remover and installer set for BMW N53, N54, N55

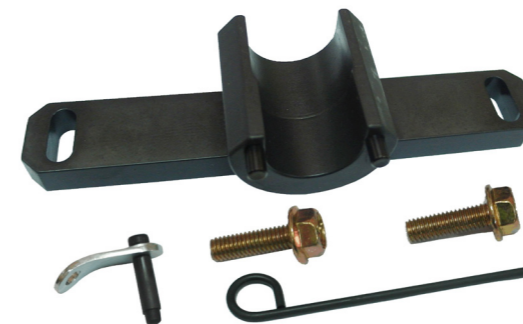


911G11

5/25/25.4/1.51' 5000g

- For removal and installation of sealing cap of vacuum pump.
- Application : BMW N53, N54, N55 engine.

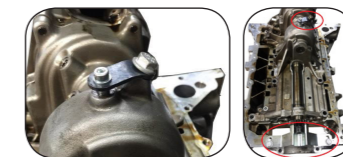
Balance shafts adjusting tool for BMW N20



905G23

10/5.5/6/0.43' 550g

- For fixing the balancer shaft and holding chain sprocket.
- To be used for repairing the chain and sprocket wheel drive.
- Application : BMW N20 engine.



Crankshaft pulley holder for BMW N47/N57



905G25

5/13.7/14.1/0.85' 2740g

- Use for aligning and holding the angle of the crankshaft and pulley while installing and removing the crankshaft pulley.
- Application : BMW N47, N57 engine.

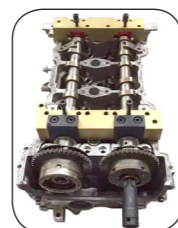
Engine timing tool set for BENZ M133, M270, M274



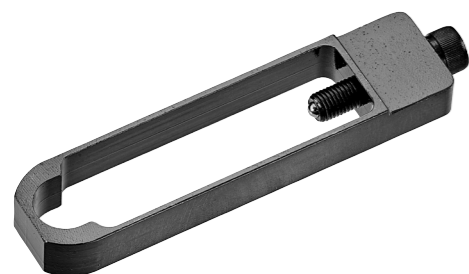
916G7

3/21.9/22.9/1.5' 7293g

- Special design for positioning the camshaft in TDC position.
- Applications : A, B, CLA, C and E class vehicles.



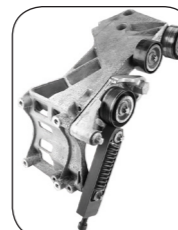
Belt tensioner tool for Benz



9G0810

30/10.8/11.8/0.66' 360g

- Effectively compresses hydraulic belt tensioner (alternator with start-stop function).
- Application : Benz : A Class - W169 (04-12)(A150,A160,A170, A180,A200, A200T)
B Class - W245 (05-11) (B150,B160,B170, B180,B200,B200T)



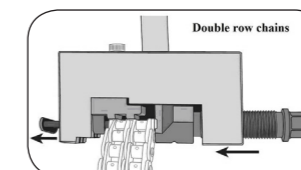
Diesel engine timing chain tool kit for Mercedes Benz / Chrysler / Jeep



912G13

10/24.8/25/0.9' 2304g

- The link separating tool and the link assembly tool allow for quick and easy separation and assembly of the timing chain.
- Suitable for duplex timing chains, for most BENZ diesel engines.
- May also be used on some Chrysler/Jeep diesel engines.



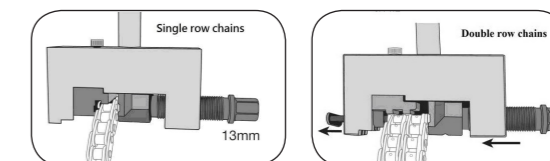
Diesel engine timing chain tool kit for Mercedes Benz / Chrysler / Jeep



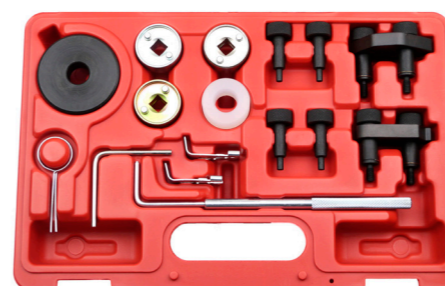
922G7

4/11.6/11.9/0.6' 2932g

- The link separating tool and the link assembly tool allow for quick and easy separation and assembly of the timing chain.
- Suitable for simplex and duplex timing chains, for most BENZ diesel / petrol engines.
- May also be used on some Chrysler/Jeep diesel engines.



Engine timing tool set for VAG



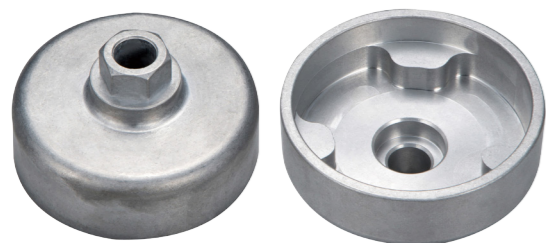
916G8

10/15.6/16.6/1.8' 1560g

- Use for correct the camshaft and crankshaft timing position.
- Applicable: 2006~2013 VAG series TSI, TFSI EA888 engine (1.8L, 2.0L).
- Engine code : BYT,BZB,CABA,CABB,CABD,CADA,CAEA, CAEB,CAWA,CAWB,CBFA,CCTA,CCZA, CCZB,CCZC,CDAACDAB,CDHA,CDHB, CDNB, CDNC,CDND,CESA,CETA,CFKA. CGYA,CJEB,CJBA,CJSB.



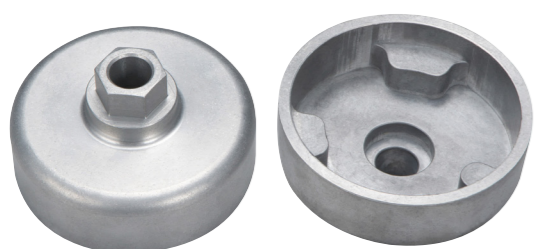
Timing chain tensioning socket for VW / AUDI 4.0L



9G0811

- For tensioning the timing chain with the camshaft adjuster.
- Use to rotate the cam phase when tightening the timing chain.
- Applicable : Audi A6 2011 ~, Audi A7 Sportback 2011 ~, Audi A8 2010 ~
8 cylinder 4.0L TFSi direct injection engine.

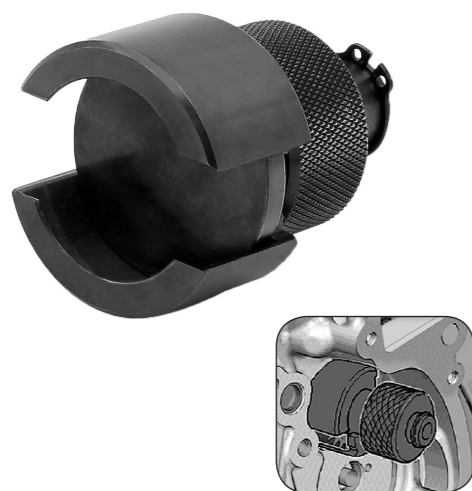
Timing chain tensioning socket for VW / AUDI 3.0L



9G0812

- Used for tensioning timing chain via camshaft adjuster.
- Application : VW / AUDI 6 cylinder 3.0L, 4V supercharged direct injection engine (generation IV).

Balancer shaft puller for VAG 1.8/2.0



9G1221

48/12/13/1.78' 250g

- Use for removing the balancer shaft on 4-cylinder injection engine(1.8, 2.0L-chain drive).
- Internal thread M8 x 1.25 for sliding hammer.
- Applicable: VW : Golf 2004 ~, Passat 2006 ~, Passat CC 2009 ~
EOS 2006 ~, Tiguan 2008 ~
AUDI : A3 2004 ~, A4 2008 ~, A5 2008 ~, TT 2007 ~
SEAT : AlhaMBra 2011 ~, Exeo 2009 ~, Leon 2006 ~
Toledo 2005 ~, Altea 2005 ~, Altea XL 2007 ~
Altea Freetrack 2007 ~

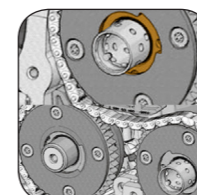
Camshaft adapter socket for VAG



9G0618

150/18/19/0.63' 120g

- Used to rotate and hold intake camshaft during timing chain service on 4-cylinder 1.8 and 2.0 liter 4V TFSI direct injection engine (generation III).
- Applicable : AUDI : A3(12~16), A3 Sportback(12~16), A3 Cabriolet(13~16), A4(08~15), A4 Quattro(12~15), A5(09~11), A5 Sportback(09~16), A5 Cabriolet(09~12), TT(15~17)
VW : Beetle(13~16), CC(12~15), EOS(08~15), Golf V(03~09), Golf VI(09~13), Golf VII(12~15), Golf Alltrack(14~17), Jetta V(05~11), Jetta VI(11~16), Passat(11~17), Tiguan(07~15), Touran (14~17)
SEAT : Alhambra(11~16), Altea(09~16), Altea XL(09~16), Exeo(09~16), Leon(09~17), Leon ST(13~17), Altea Freetrack(09~16)
SKODA : Octavia II (08~13), Octavia III (13~17), Yeti(13~15), Superb II (08~15), Superb III (15~17)



Vibration damper holding tool set for VAG



905G26

6/14.9/15.9/1.4' 2480g

- Used for dismantling and assembling the vibration damper on the vehicles listed on 4 cyl. 1.8L, 2.0L, 4V TFSI direct injection engine.
- Applications : VW - Passat (07-17), Scirocco (08-17), Sharan (11-17), Tiguan (07-16), Transporter T5 (11-15), Amarok (10-16), Transporter T6 (15-17), Beetle (13-17), CC (12-15), Eos (08-15), Polo (14-17), Touran (15-17), Golf (07-17)
AUDI - A1 (15-17), A3 (07-17), A4 (07-17), A5 (07-17), A6 (12-17), A7 (14-17), A8 (12-14), Q3 (11-17), Q5 (08-17), TT (08-17), Q7 (15-17), S1 (14-17), S3 (13-17)
SEAT - Altea (06-15), Exeo (10-13), Ibiza (15-17), Leon (07-17), Toledo (07-17)
SKODA - Octavia (07-17), Superb (08-17), Yeti (09-15)



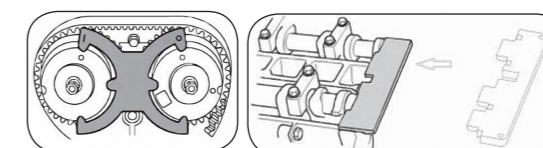
Engine timing tool set for FORD 1.6 ECOBOOST



907G21

5/8.75/9.15/0.8' 1750g

- Specially designed for aligning the engine timing for FORD 1.6 Ti-VCT, 1.5/1.6VVT ECOBOOST engine.
- Applicable: FORD-B-Max (12-17), C-Max (03-17), Fiesta (08-17), Focus (04-17), Galaxy (10-15), Grand C-Max (10-17), Tourneo Connect (13-15), Kuga (13-15), S-Max (10-15), Grand Tourneo Connect (13-15), Mondeo (07-15), Transit Connect (13-16).
VOLVO - S60 (11-15), S80 (10-15), V40 (20-15), V60 (11-15), V70 (10-15).



Engine timing tool set for Alfa Romeo/Fiat multiair



910G10

10/10.8/11.8/1.4' 1080g

- Features a camshaft setting plate, crankshaft locking tool and tensioner adjuster.
- Applications : Alfa Romeo - Mito/Giulietta Multiair 105 Multiair Turbo 135/163/170 (09-12)
Fiat - Bravo (10-15), Punto(12-14), Punto Evo(09-12)
Lancia - Delta(10-13)



Puller for ribbed drive pulleys



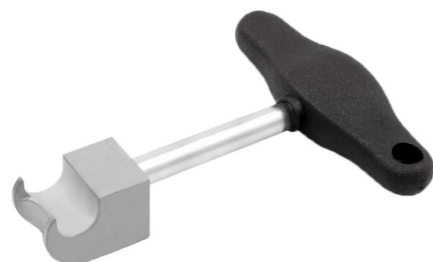
902G27

16/21/22/0.7' 1289g

- This tool helps to remove the crankshaft pulleys without damage.
- Suitable for crankshafts, alternators, air conditioning units and water pumps.
- Pulley capacity: 45 to 165 mm.



Hose Clamp Removal Tool



62532

96/12/13/1.78' 125g

- Universally designed for the loosening / opening of HENN clamps as found on coolant hoses / charge air hoses in passenger cars.
- Applicable : VW-Audi, Seat, Skoda, BMW, Peugeot, Citroen, Dacia, Fiat, Ford, Kia, Lexus, Mazda, Mercedes, Nissan, Opel/Vauxhall, Porsche, Renault, Toyota, Volvo etc.



Heater hose disconnect tool for FORD



9G0729

72/1.2/1.7/0.8' 15g

- Heater hose connections are in hard to reach area and difficult to turn.
- Just clipping this tool on and turning makes the job easier.
- Application : Ford - Focus 2.0L (12-16), Escape /Kuga 2.0L EcoBoost (13-16).



Radiator / Coolant cap wrench for BMW



9G0730

98g

- Can be used to loosen stubborn caps on radiators and reservoirs.
- Especially suitable for use in narrow spaces.
- Works on BMW vehicles : E60, E61, E63, E64, E70, E71, E72, E81, E82, E84, E87, E88, E89, E90, E91, E92, E93, F01, F02, F03, F04, F06, F07, F10, F11, F12, F13, F15, F16, F18, F20, F21, F25, F26, F30, F31, F32, F33, F34, F35, F36, F80, F82, F83, F85, F86.



Radiator / Coolant cap wrench for FORD / LAND ROVER MAZDA / VOLVO



9G0731

58g

- Can be used to loosen stubborn caps on radiators and reservoirs.
- Especially suitable for use in narrow spaces.
- Applicable : Ford, Land Rover, Mazda, Volvo.



Two way viscous fan spanner



9G0710B 36/21.4/24.5/2.5' 595g

- For the removal of thermo-viscous fans on BMW, FORD, OPEL & VAUXHALL vehicles.
- Size: 32mm, 36mm.

Plastic oil drain plug driver tool set



904G22 48/8.2/9.2/0.87' 167g

- For removing and installing of the plastic oil drain plug at the plastic oil pan.
- Application : FORD, PEUGEOT, CITROEN, BMW, VW, AUDI, SKODA, SEAT, PORSCHE.

Contents :

- Offset bit holder wrench 100mm.
- 10mm Hex bit , 1/4" hex shank.
- 3/8" Sq. with slot, 1/4" hex shank.
- VAG oil plug bit, 1/4" hex shank.



Plastic oil drain plug driver tool for FORD / PEUGEOT / CITRONE



Part no.	Size	mm	g	pc/box
61938	1/4"Hex-3/8"Sq.	25	13	20

- For removing and installing of the plastic oil drain plug at the plastic oil pan.
- Size : 3/8" Sq. with slot, 1/4" hex shank
- Application : FORD - C-Max (15~), Focus (14~), Galaxy(15~), Kuga (14~), S-Max (2015~), Mondeo (2014~), Transit / Tourneo Connect (13~), Edge (15~17), F-150 (15~16), Fusion (17), Mustang (15~17) F-250/350/450/550 Super Duty - diesel (11~12) PEUGEOT - 308 (13~), 508 (14~), 3008 (09~), 5008 (09~), Traveller (16~) CITRONE - C4 (13~), C5 (09~15), D84 (14~15), D85 (13~15), Jumpy (216~), SpaceTourer (16~)

10pc Cup type oil filter wrench kit



61936 6/10.8/11.8/1.4' 1792g

- To go with 3/8" or 1/2" drive .
- Adaptor: 1/2" (F) x 3/8" (M) (with 21mm Hex) and 3/8" (F) x 1/2" (M).
- Size: 27/6P, 32/6P, 36/6P, 76/14P, 74/14P(75.6/14P), 86/16P, 76/12P, 93/15P .
- Suitable for Benz, BMW, Volvo, VW, Fiat, Renault, Honda, Mazda, Nissan, Toyota, etc.

Fuel injector seal installer / remover for BMW



908G10 10/11/11.7/1.62' 1100g

- Special designed for removing and installing the injectors seal (PTFE seal).
- Application : BMW - N13 / N14 / N18 / N20 / N26 / N43 / N53 / N54 / N55 / N63 / N74 / S55 / S63 / B38 / B48



Fuel injector and seal tool kit for BMW



908G19 10/10.3/11.3/0.8' 1030g

- Used to remove fuel injectors and install new seals onto the injectors.
- Applicable : BMW - N54, N63 engine. Mini Cooper - N14, N18 engines.



Injector nozzle tool set for Benz

903G25



- For removing the petrol injector using a slide hammer or T bar.
- For restoring fuel injectors immediately after calibration of the sealing rings.
- For most 4.6 to 5.5 litre petrol engines.
- Applications : M133, M152, M157, M270, M274, M276, M278 engines.



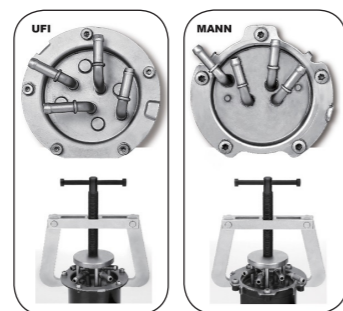
Fuel filter cover mounting tool for VAG

9G0131

10/10.8/11.3/0.87' 1080g



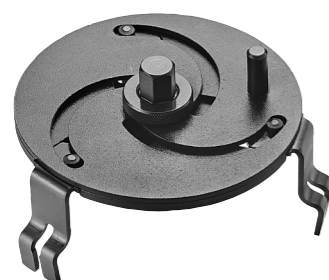
- The fuel filter cover mounting tool is designed to press the fuel filter cover evenly and in a torsion-free manner into the seal seat in the fuel filter housing.
- Application : VW, Audi, Skoda and Seat diesel vehicles with UFI and MANN fuel filter housing.



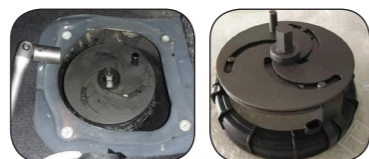
3 Jaws adjustable fuel tank lid wrench

9G0732

12/13/14/1.2' 1080g



- Adjustable to suit for most collars from 90-170mm.
- Lock in place and turn with a 16 wrench or socket.
- An innovative tool for the removal and fitting for fuel gauge sender collars.



Diesel filter wrench for VW / Volvo

61937

96/15/16/1.2' 150g



- Specially designed to fit the plastic housing for removal and replacement of the paper fuel filter.
- Application: VW : Crafter 2.5 TDi from 2006 to 2013.
Volvo : V70, XC70, S40, S60, S80, XC90, V50 4 and 5 cylinder 2.0lt and 2.4lt diesel engines.



Auto-flexing fuel line socket

905G27

20/9.5/10.5/1.3' 475g



- With Auto-flexing fuel line sockets, you can reach for fuel line nut in narrow space.
- In addition to auto-flexing function, the socket can tight the nut without losing torque.
- Size : 11 / 13 / 14 / 15 / 17 mm.
- Max torque : 30 Nm.



Diesel injector puller adapter master kit

921G3

2/12.5/13/0.8' 6250g



- Universal tool kit for disassembling the injector and for preparing the removal of the injector.
- Suits a huge range of vehicles Including Mercedes Benz, BMW, VW, Audi, VAG, Volvo, Ford, and Mazda plus many more.
- Contents :
 - Special bit insert Hex: 7.6mm / 6.6mm
 - Pull Spindle: IT-M14x1.5mm / IT-M16x1.5mm / IT-M25x0.5mm / IT-M25x0.75mm / IT-M27x1mm / OT-M16x1.0mm / OT-M17x1.0mm / OT-M20x1.0mm / OT-M25x1.0mm / OT-M27x1.0mm
 - Universal joint: M18x1.5mm
 - Special socket insert: 25mm / 27mm / 29mm / 30mm (Hex)
 - Injector Gripper hook: 12mm / 13.5mm / 16mm / 26mm



Diesel engine compression tester kit



938G2

3/13/14/1.8' 4330g

- Large, 2-1/2" O.D., 70kg/cm² (1000psi) gauge with rubber bumper, straight and right angled quick connect fittings and an extensive range of glow plug and injector adaptors enable this kit to cover the vast majority of car, van, truck and bus, agricultural and marine diesel engines.
- Glow plug Adaptor: Wide range of Alfa , BMW , Chrysler , Daewoo, Fiat , Ford , Hyundai, Isuzu, LandRover, LDV, Mazda, Mercedes , Mitsubishi , Nissan , Opel , PSA , Renault , Saab , Suzuki , Toyota , VAG , Vauxhall , Volvo diesel engines.
- Injector: M20 , M22 , M24 & Ford Stanadyne injector plus clamp-on injector.



6ps EGT Sensor socket set



906G11

- This set of sockets is designed to remove exhaust temperature sensors.
- Two different styles will remove most EGT sensors used on cars, light, medium, and heavy-duty trucks.
- size : 13, 14, 17 mm.



1/2"DR. Sensor & sending unit socket 17mm

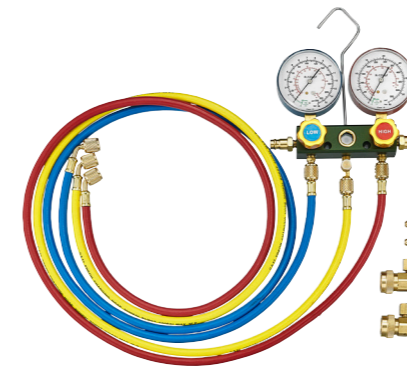


44317

Part no.	Size	mm	g	pc/box
44317	17	85	182	10

- Works on most vehicle EGT and lambda or oxygen sensors.
- A slot provided in the side of the socket allows wire clearance.
- 1/2" SQ. DR., 21mm Hex DR.

Aluminum R1234yf Auto A/C manifold gauge set (with 60" hose 1/4" SAE & 2 couplers)

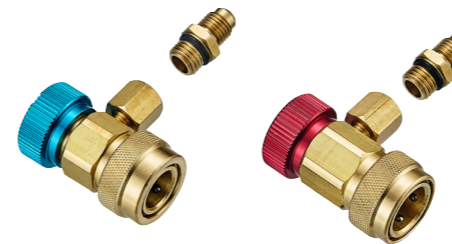


9G4109

10/22/23/2.4' 2200g

- R1234yf sight glass manifold with three 60" 1/4" SAE color-coded hoses and 2 couplers.
- With sight glasses.
- 80 mm Gauge faces for easier viewing.
- High pressure : 0~550 psi
0~40 bar
- Low pressure : 0~230 psi
0~16 bar
- Vacuum : 0~30 in/Hg

R-1234yf Adjustable quick coupler set



9G4126

50/18.4/19.4/0.8' 368g

- Including the high-side and low-side coupler.
- The valve core puller is adjustable to fit the different valve core.



Gearless brake caliper pressing tool



903T7

5/13.2/14.2/0.7' 2640g

- Centrally located gearless ratchet for use in tight spaces.
- Evenly spreads in a parallel manner to prevent misalignment of pistons.
- 3 sets of changeable pads for 1, 2, 4, 6, and 8 multi piston calipers .
- Applicable : pad sets : 90mm x 60mm, for 1&2 pistons
148mm x 60mm for 4 pistons
180mm x 60mm for 6&8 pistons



Hydraulic brake caliper piston rewind tool



902T3

8/15/16/1.5' 1870g

- 360-degree pad swing allows access at any angle.
- Hydraulic cylinder stroke from 38mm to 58mm.
- Four pad sizes: 90, 110, 150, 180 mm using on single, dual, quad, 6 & 8 piston caliper.
- Pads can be reset when rewinding the screw of hydraulic ram at same time that is for taking out tools from caliper easily.



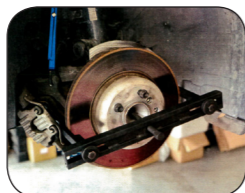
Brake disc remover tool



9T0108

5/15/16/1.3' 3000g

- No hammering shock effect on the wheel bearing, electronic sensors, suspension, ball-joint etc.
- The auto adjust jaw let you install the tool easily, quickly, and safely.
- Range: 170 ~ 400 mm.



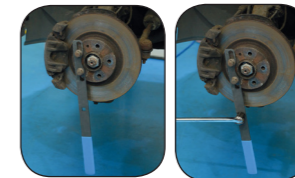
Wheel hub holding tool



9T0318

547g

- Used to hold the wheel hub in place while the axle nut is removed / installed or wheel bearing service.
- 1/2" square drive for breaker / extension bar.
- Works on vehicles with wheel stud bolt patterns ranging from 4 x 100mm (3.937") to 8 x 170.3mm (6.704").



9pc Wheel lock removal impact socket set

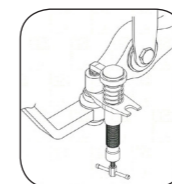


909T7

12/17.5/18/1.4' 1450g

- This set will remove and replace most locking wheel nuts / hub cap locks on GM, Ford, Chrysler.
- Removes and replaces hub caps without causing damage or distortion to the original cap.
- Suitable for American vehicles.

Hydraulic ball-joint puller



62822

4/17/18/1.0' 4250g

- The special design and function for dismantling the ball-joint on passenger cars.
- Both of the tools can switch position in tight areas of the wheel suspension.
- The jaw opening also can be turn to fit ball-joint size.
- Capacity force : 7 ton.
- Jaw opening : 25, 33 mm.
- Fit range : 60~72 mm.



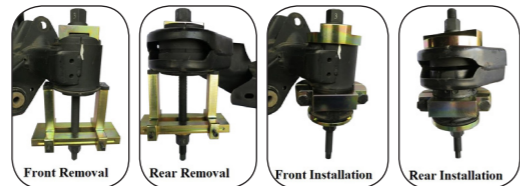
Rear suspension bush remover / installer for BMW



910T2

1/8.9/9.5/1.04' 8900g

- Extractor for replacement of the rear suspension mounting bushes.
- Replacement of the mounting bush without completely lowering the rear axle assembly.
- Application : BMW E87/E90.



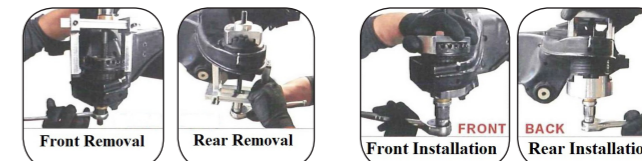
Rear sub-frame bush installer/remover for BENZ



912T7

1/9.8/10.4/1.04' 9800g

- Removal and installation of rear rubber mounts of axle suspension.
- Application : BENZ W204.



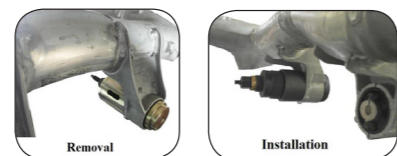
Differential front bush removal / installation tool kit for BMW



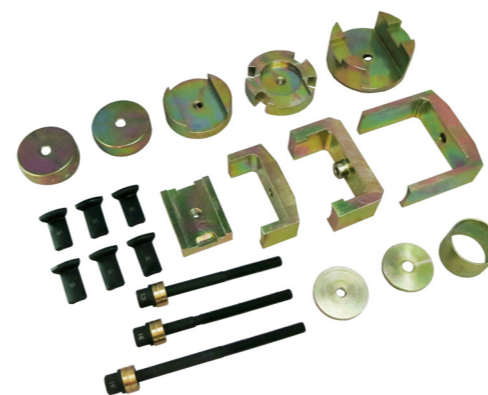
907T7

20/20/21/0.8' 1000g

- The front differential bushing on the BMW can be removed/installed without removing the differential.
- Application : BMW - F01/F02/F04/F06/F07/F10-F13/F18 .



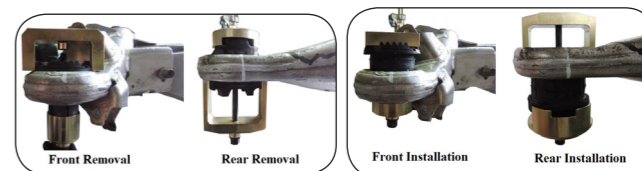
Rear sub-frame bush remover/installer for BENZ



921T2

1/13/13.6/0.9' 13000g

- Extractor for replacement of the front and rear metallic rear sub-frame.
- Application : BENZ W211, W219, W230.



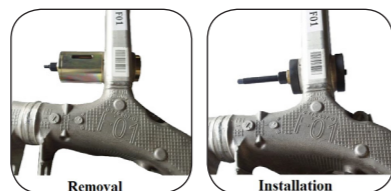
Differential rear bush removal / installation tool kit for BMW



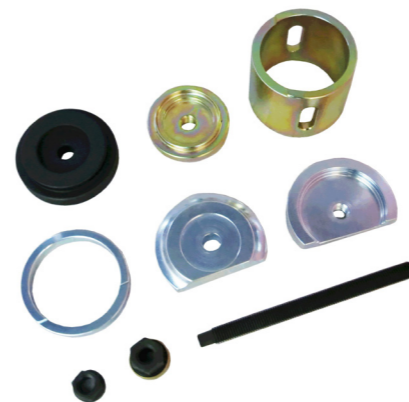
906T8

20/20/21/0.8' 1000g

- The rear differential bushing on the BMW can be removed/installed without removing the differential.
- Application : BMW-F01/F02/F04/F06/F07/F10-F13/F18.



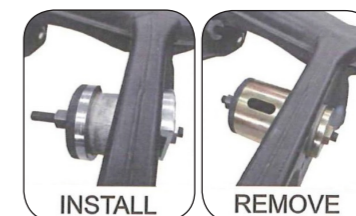
Differential bush – installer/ remover for BENZ



909T8

5/22/22.6/1.5' 4400g

- For replacement of the rear sub-frame differential metallic bush.
- Applicable : BENZ: W204, W207, W212, W216, W218.



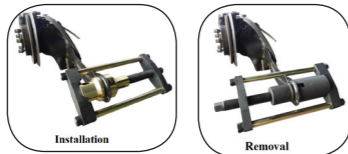
Rear trailing arm bushing remover / installer for FORD / MAZDA / VOLVO



904T10

2/18/19.5/0.5' 9250g

- Easy removal and replacement of the rear trailing arm bushes without removing the trailing arm completely from the vehicle.
- Applicable : Mazda - PREMACY CREW/CR3W (05~10), AXELA (03-09), 3 - BK (03~08), BL (09~), 5- CR (05~10)
Ford - C-MAX CAP (03-07), FOCUS I (98-05), KUGA CBV FOCUS II (04-08) FOCUS CB4 (08-11)
Volvo - S40 II / V50 (04-12)



Rear trailing arm bush remover/ installer for FORD / VOLVO



903T8

2/16/17/1.15' 8000g

- Suitable for the removal / installation of the rear trailing arm mounting bushes on Ford vehicles.
- Can be used in situ without removing the arm from the vehicle.
- Also suitable for some Volvo vehicles that share the same Ford platform.
- Applications: Ford - Mondeo Mk IV (07on), S-Max (06on), Galaxy (06on)
Volvo - S60, S80, XC60, V70, XC70 (06-09) with Ford Platform



DSG Transmission filter wrench for VAG - short version



9T0207

48/12/13/1.78' 250g

- Specially designed to remove and install the transmission filter housing cover when changing the transmission filter on the DGS gearbox in VW, Audi, Skoda and Seat vehicles.
- The oil change can be done without removing the battery, saving time.
- 1/2"Dr x 24mm x 100mm.
- Shorter version available for common rail engines.



DSG Transmission filter wrench for VAG



9T0207L

48/12/13/1.78' 250g

- Specially designed to remove and install the transmission filter housing cover when changing the transmission filter on the DGS gearbox in VW, Audi, Skoda and Seat vehicles.
- The oil change can be done without removing the battery, saving time.
- 1/2"Dr x 24mm x 138mm.



Custom built bush/bearing/seal driver set



952T1

2/23/24/1.2' 11500g

- This master set allows you to build your own custom bushing driver.
- Select the required sizes and assemble your driver tool, to suit the required seal, bush or bearing job.
- Build to suit the required seal, bush or bearing job.
- Disc size: go from 18mm to 65mm in 1mm increments and 74mm.



Slogging wrench for brake caliper screw



793A6			
Part no.	Size	Application	g
793A618	3/4"DR.x E18	for MAN TGL / TGM	488
793A620	3/4"DR.x E20	for MAN TGL / TGM	520
793A624	3/4"DR.x E24	for MAN TGA / TGS / TGX	564
793A9			
Part no.	Size	Application	g
793A924	3/4"DR.x M24	for SAF	546
793A926	3/4"DR.x M26	for DAF XF / XF95 / XF105 / XF106	530

- This tool is designed to loosen/tighten the brake caliper screw connections on commercial vehicle.
- Correct tightening of screws with torque wrench in accordance with the manufacturer's specifications (Engraved with a torque conversion formula).

Volvo (FM12) valve spring compressor tool

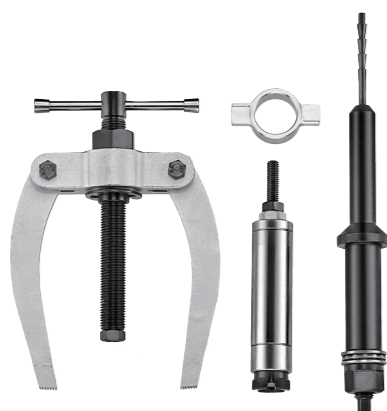


62115 10/20/21/1.8' 2000g

- For assembly and disassembly of valve springs and valves.
- Application : Volvo FM12.

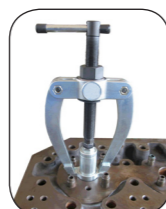


Volvo (FM12) truck injector sleeve remover/installer set



904T9 6/20/21/1" 3340g

- This tool is designed for installing and removing sleeve.
- You need this tool to change the sleeve, when the truck seems powerless or it smokes with black clouds.
- Application: VOLVO FM 12 Truck.



BENZ Truck filter wrench 46mm



61939 100/21.5/22.5/1.0' 250g

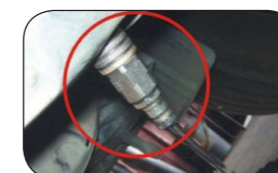
- To remove the oil filter of BENZ truck.
- Size: 3/8"Dr, 6 point, 46mm.
- Application: BENZ TRUCK ACTROS, ATEGO, AXOR and ECONIC...

SCANIA Radiator quick adapter

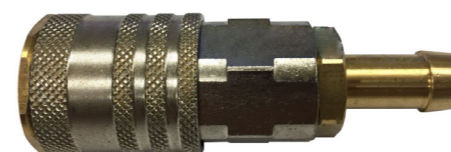


9G0733 60/9.5/10.5/0.61' 155g

- Special designed female adapter for radiator when purge & refill radiator liquid.
- Applicable: SCANIA (340 / 360) trucks and buses.



VOLVO Radiator quick adaptor



9G0735 60/9.5/10.5/0.6' 155g

- Special designed female adapter for radiator when purge & refill radiator liquid.
- Applicable : Volvo trucks.



9pc Sockets for ball bearing nuts (outer teeth)



909T3

3/17.6/18.6/0.88' 5800g

- Outer-teeth sockets for ball bearing nuts.
- 1/2": KM4,5,6,7
- 3/4": KM8,9,10,11,12

Size	⊙	Nut slot	Length
KM4	Ø32	4	55
KM5	Ø38	5	55
KM6	Ø45	5	55
KM7	Ø52	5	55
KM8	Ø58	6	68
KM9	Ø65	6	68
KM10	Ø70	6	68
KM11	Ø75	7	68
KM12	Ø80	7	68

Rim wrench



6774119		O.D.	<i>l</i>		
Part no.	Size	mm	mm	g	pc/box
6774119	41x19sq.	25	400	1900	2

Socket for ball bearing nuts (outer teeth)



9TS4KM		O.D.	Nut slot	<i>l</i>		
Part no.	Size	mm	mm	mm	g	pc/box
9TS4KM04	1/2"DR. KM4	ø32	4	55	176	1
9TS4KM05	1/2"DR. KM5	ø38	5	55	184	1
9TS4KM06	1/2"DR. KM6	ø45	5	55	228	1
9TS4KM07	1/2"DR. KM7	ø52	5	55	294	1
9TS6KM		O.D.	Nut slot	<i>l</i>		
Part no.	Size	mm	mm	mm	g	pc/box
9TS6KM08	3/4"DR. KM8	ø58	6	68	560	1
9TS6KM09	3/4"DR. KM9	ø65	6	68	734	1
9TS6KM10	3/4"DR. KM10	ø70	6	68	828	1
9TS6KM11	3/4"DR. KM11	ø75	7	68	954	1
9TS6KM12	3/4"DR. KM12	ø80	7	68	1074	1

Multi-functional adjustable LED COB headlight



68603A

20/3.2/4.2/0.38' 158g

- LED : 8W COB (Chip on Board.) LED.
- Dual-use handheld lights or headlights.
- 360° Swivel Clip with molded magnet for convenience to use.
- LED section can adjust max. up to 120° .
- Switching and dimming button, unique power dial to adjust from 0-236 lumens.
- Externally and internally designed for waterproof, harsh conditions and dirty environments, accord with IP64 regulation.
- Powered by 3 pieces AAA 1.5V dry batteries.



2-IN-1 LED Focus adjustable flashlight / COB work light



68611S

145g

- Lumen switch-turn for on/off, then turn the switch slightly right or left for necessary light.
- Focus Adjustable.
- Foldable base with powerful magnet.
- Charging battery-use USB charger and USB cord connected to the USB charging port and then plug into socket for re-charging.
- Built-in 2200 mAh Li-ion battery capacity.
- LED max power: 400 Lumens 8W COB LED + 3W tip light.
- Charger time: 3.5~4.0 hours.
- Active time: more than 3 hours.
- Charger input: AC100~240V 50/60Hz.
- Product size: 230(L) x 30(W) x 40(H)mm.

LED COB Slim work light (nature white + yellow light)



68611Y

378g

- Lumen Switch- turn for on/off, then turn the switch slightly right or left for necessary light.
- Aside functional switch available.
- Foldable base with powerful magnet.
- Swivel hanging hook.
- Application : lighting / polishing / waxing.
- Charging battery – use USB charger and USB cord connect to the USB charging port and then plug into socket for re-charging.
- Built-In 3350 mAh Li-ion battery capacity.
- LED max power : nature white : 620 lumens 10W COB LED
yellow light : 620 lumens 10W COB LED
nature white + yellow light : 770 lumens 20W COB LED
- Charging time: 3.5 hours.
- Active time: more than 3 hours.
- Charger input: AC100~240V 50/60Hz.

LED COB Slim Work Light (nature white + UV light)



68611U

378g

- Lumen Switch- turn for on/off, then turn the switch slightly right or left for necessary light.
- Aside functional switch available.
- Foldable base with powerful magnet.
- Swivel hanging hook.
- Application : lighting / A/C refrigerant / coolant leak.
- Charging Battery – use USB charger and USB cord connect to the USB charging port and then plug into socket for re-charging.
- Built-In 3350 mAh Li-ion battery capacity.
- LED max power : nature white : 620 lumens 10W COB LED
UV light : 4.822
- Charging time: 3.5 hours.
- Active time: more than 3 hours.
- Charger input: AC100~240V 50/60Hz.

Refill pressure sprayer



9U0207

12/3.5/4.5/1' 290g

- Ideal for lubrication, paint, clean dust, antirust, etc.
- Long type nozzle suitable for narrow & difficult space spray.
- Refill pressure with universal adapter for easily to stuff air pressure.
- Build in safety valve pre-setting 90 PSI (6.3 Bar).
- Aluminum canister for long life use.
- Max. Capacity: 650cc.



3/4" Manual impact driver



8176

1150g

- Instant impact force loosens rusted or frozen fasteners without damaging them.
- This also can be used for tightening bolts or nuts firmly as being reversible.
- Forward and reverse drive direction.



Blind hole bearing puller and slide hammer set



915T1

4/20/21.5/2.2' 5125g

- Two-function bearing remover for puller and slide hammer.
- One slide hammer, 62mm tailpipe expanders and pullers for 8mm-55mm.



3/4" Digital torque extension



647G6250

12/22/25.4/2.4' 1830g

- Converts any ratchet or breaker bar into a digital torque wrench.
- Displaying torque value when pressure is applied.
- Highest torque value displays after load is released, (PEAK mode).
- Accurate within $\pm 2\%$.
- Torque range: 52 to 600 Ft-lb 70 to 813 Nm.
- LED backlight.
- 10 memory settings.
- Unit selection: Nm, Ft-lb, In-lb, kg-m, kg-cm.
- Length: 255mm.

1/2" Digital torque adapter



647G4075

24/9.2/10.2/0.78' 380g

- Converts any ratchet or breaker bar into a digital torque wrench.
- Displaying torque value when pressure is applied.
- Highest torque value displays after load is released (PEAK mode).
- Accurate within $\pm 2\%$.
- Torque range: 30 to 260 Ft-lb 40 to 350 Nm.
- 180 degrees swivel screen.
- LED backlight.
- 10 memory settings.
- Unit selection: Nm, Ft-lb, In-lb, kg-m, kg-cm.
- Length: 76 mm.



Digital torque wrench



647G Part no.	Capacity Nm	l mm	g
647G2360	1/4"DR 3-30 Nm	360	1012
647G3440	3/8" DR 10-100 Nm	440	1204
647G4640	1/2" DR 35-350 Nm	640	2160

- Buzzer and LED indicator.
- Mode : Peak, Track.
- Auto sleep after 120s when idle.
- RS-232 Data out.
- CW/ CCW Direction.
- Accuracy : $\pm 1\%$.
- Memory : 10 Readings.
- Unit selection : Nm, Ft-lb, In-lb, kg-m.
- Battery : 1.5V AA Batteries x 3.

Digital torque angle wrench



647G...A Part no.	Capacity Nm	l mm	g
647G2360A	1/4"DR 3-30 Nm	360	1012
647G3440A	3/8" DR 10-100 Nm	440	1204
647G4640A	1/2" DR 35-350 Nm	640	2160

- Torque angle : 1°-180°
- Buzzer and LED indicator.
- Mode : Peak, angle & peak, Track.
- Auto sleep after 120s when idle.
- RS-232 Data out.
- CW/ CCW Direction.
- Accuracy : $\pm 1\%$.
- Memory : 10 Readings.
- Unit selection : Nm, Ft-lb, In-lb, kg-m.
- Battery : 1.5V AA Batteries x 3.



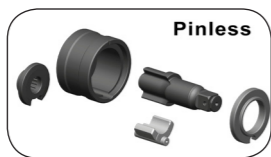
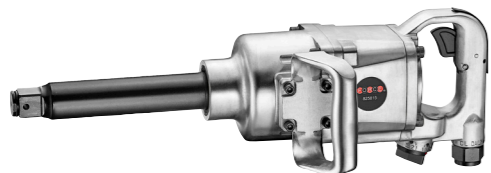
1/2"DR. Angle impact wrench



825412	<i>l</i>		
Part no.	mm	g	pc/box
825412	350-13.8"	1960	1

Specifications:
 Square Drive1/2"
 Free Speed (R.P.M).....4700
 Max. Torque (Ft/Lbs) / (Nm).....170/230
 Air Inlet (P.T.).....1/4"
 • Single hammer impulse device.
 • High torque.
 • Reversible lever.
 • Two power adjustable screwing positions.
 • Exhaust through handle.

1"DR. Impact wrench with 6" anvil



825815	<i>l</i>		
Part no.	mm	kg	pc/box
825815	515-20"	12.06	1

Specifications:
 Square Drive1"
 Free Speed (R.P.M).....4000
 Max. Torque (Ft/Lbs) / (Nm).....1860/2522
 Air Pressure (PSI)90
 Air Inlet (P.T.)1/2"

7pc 1/2"DR. Hex ball socket bit set



4076		20/15.9/16.9/1.4'		795g
	7pc	5; 6; 7; 8; 9; 10; 12 mm (100mmL)		

10pc 1/2"DR. 6pt. Flank impact socket set



4109-10		20/25.0/26.0/0.6'		1250g
	10pc	10; 12; 13; 14; 16; 17; 19; 21; 22; 24 mm		

10pc 1/2"DR. Deep impact socket set



4107-9		10/26.9/27.9/0.7'		2690g
	10pc	11; 12; 13; 14; 16; 17; 19; 21; 22; 24 mm (85mmL)		

4107-10		10/26.9/27.9/0.7'		2690g
	10pc	10; 12; 13; 14; 16; 17; 19; 21; 22; 24 mm (85mmL)		

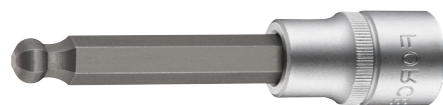


3/8"DR. 12pt. Flank socket



53915.16		<i>l</i>		
Part no.	Size	mm	g	pc/box
53915.16	15/16"	32	72	20

1/2"DR. Hex ball point socket bit



345100		<i>l</i>		
Part no.	Size	mm	g	pc/box
34510007	7	100	83	10
34510009	9	100	105	10
34510012	12	100	145	10

1/2"DR. 12pt. Flank socket



54936		<i>l</i>		
Part no.	Size	mm	g	pc/box
54936	36	48	250	10

1/2"DR. 12pt. Flank impact socket



44834		<i>l</i>		
Part no.	Size	mm	g	pc/box
44834	34	50	256	10

1"DR. 6pt. Flank deep impact socket



48510040		<i>l</i>		
Part no.	Size	mm	g	pc/box
48510040	40	100	1120	1

Box end wrench head (20x28.5mm)



685A20	<i>l</i>	
Part no.	Size	g
685A2036	36	730
685A2041	41	820
685A2046	46	930



Part No.	Page	Part No.	Page	Part No.	Page	Part No.	Page
345100...	6-36	68611S	6-30	907G21	1-7	9G0618	1-7
4076	6-35	68611U	6-31	907T7	3-20	9G0710B	1-10
4107-10	6-35	68611Y	6-30	908G10	1-11	9G0729	1-9
4107-9	6-35	793A6...	4-24	908G19	1-11	9G0730	1-9
4109-10	6-35	793A9...	4-24	909T3	4-26	9G0731	1-9
44317	1-14	8176	6-31	909T7	3-19	9G0732	1-12
44834	6-37	825412	6-34	909T8	3-21	9G0733	4-25
48510040	6-37	825815	6-34	910G10	1-8	9G0735	4-25
53915.16	6-36	902G27	1-8	910T2	3-20	9G0810	1-4
54936	6-36	902G28	1-2	911G10	1-3	9G0811	1-6
61936	1-11	902T3	3-18	911G11	1-3	9G0812	1-6
61937	1-13	903G25	1-12	912G13	1-5	9G1221	1-6
61938	1-10	903T7	3-18	912G15	1-2	9G4109	1-15
61939	4-25	903T8	3-22	912T7	3-21	9G4126	1-15
62115	4-24	904G22	1-10	915T1	6-32	9M0109	5-28
62532	1-8	904T10	3-22	916G7	1-4	9M0208	5-28
62822	3-19	904T9	4-24	916G8	1-5	9T0108	3-18
647G...	6-33	905G23	1-3	921G3	1-13	9T0207	3-22
647G...A	6-33	905G25	1-4	921T2	3-21	9T0207L	3-23
647G4075	6-32	905G26	1-7	922G7	1-5	9T0318	3-19
647G6250	6-32	905G27	1-13	938G2	1-14	9TS4KM...	4-26
6774119	4-27	906G11	1-14	952T1	3-23	9TS6KM...	4-26
685A20...	6-37	906T8	3-20	9C2010	2-16	9U0207	6-31
68603A	6-30	907G20	1-2	9G0131	1-12		



General Information

This catalogue replaces all previous editions. All rights reserved in all countries. Reprinting and excerpts require a prior permission in writing by Shyang Yun Tools Co., Ltd.

The photographs and the technical details are of the articles at present offered.

Since we are constantly updating and improving our products to meet user needs and technological developments, we reserve the right to make modifications and changes with regard to photographs, specifications, sizes, packing, weights and performance without notice.

There is no liability for printing errors and correction or replacement supplies with regard to products already delivered.

Cancellations of all models and sets may be made at any time without there being any grounds for legal claim.

FORCE is a registered trademark.

All other trademarks mentioned in this document or website are the property of their respective owners.

The use of the word partner does not imply a partnership relationship between Shyang Yun Tools Co., Ltd. and any other company.

© Copyright by Shyang Yun Tools Co., Ltd.

All rights reserved.





Shyang Yun Tools Co., Ltd.
Shyang Yun Hardware Co., Ltd.

No.161, Sitou Rd., Shengang Dist., Taichung City 42953, Taiwan

Tel: +886-4-25631268 Fax: +886-4-25632678

<http://www.force.com.tw> E-mail: info@force.com.tw

